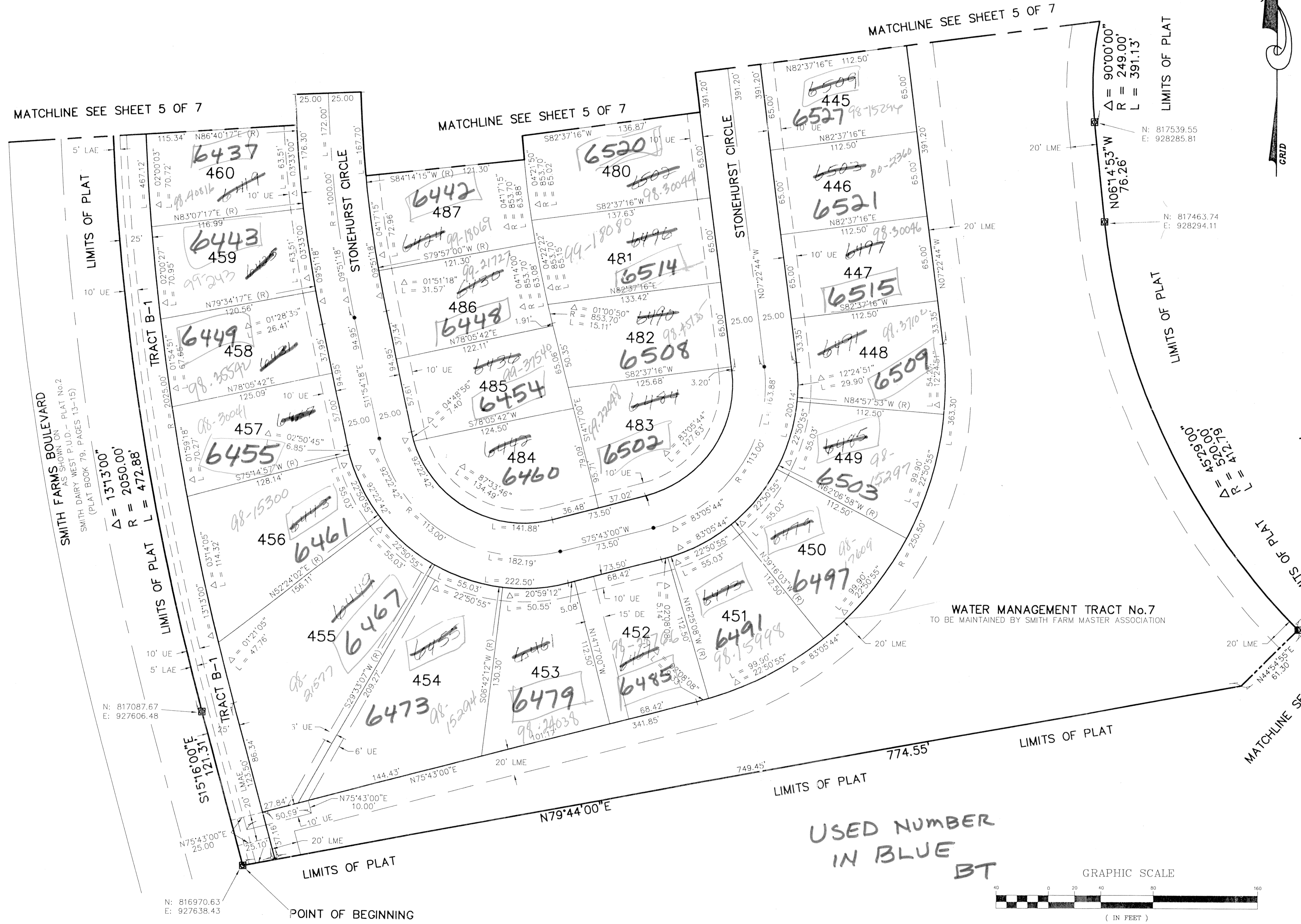
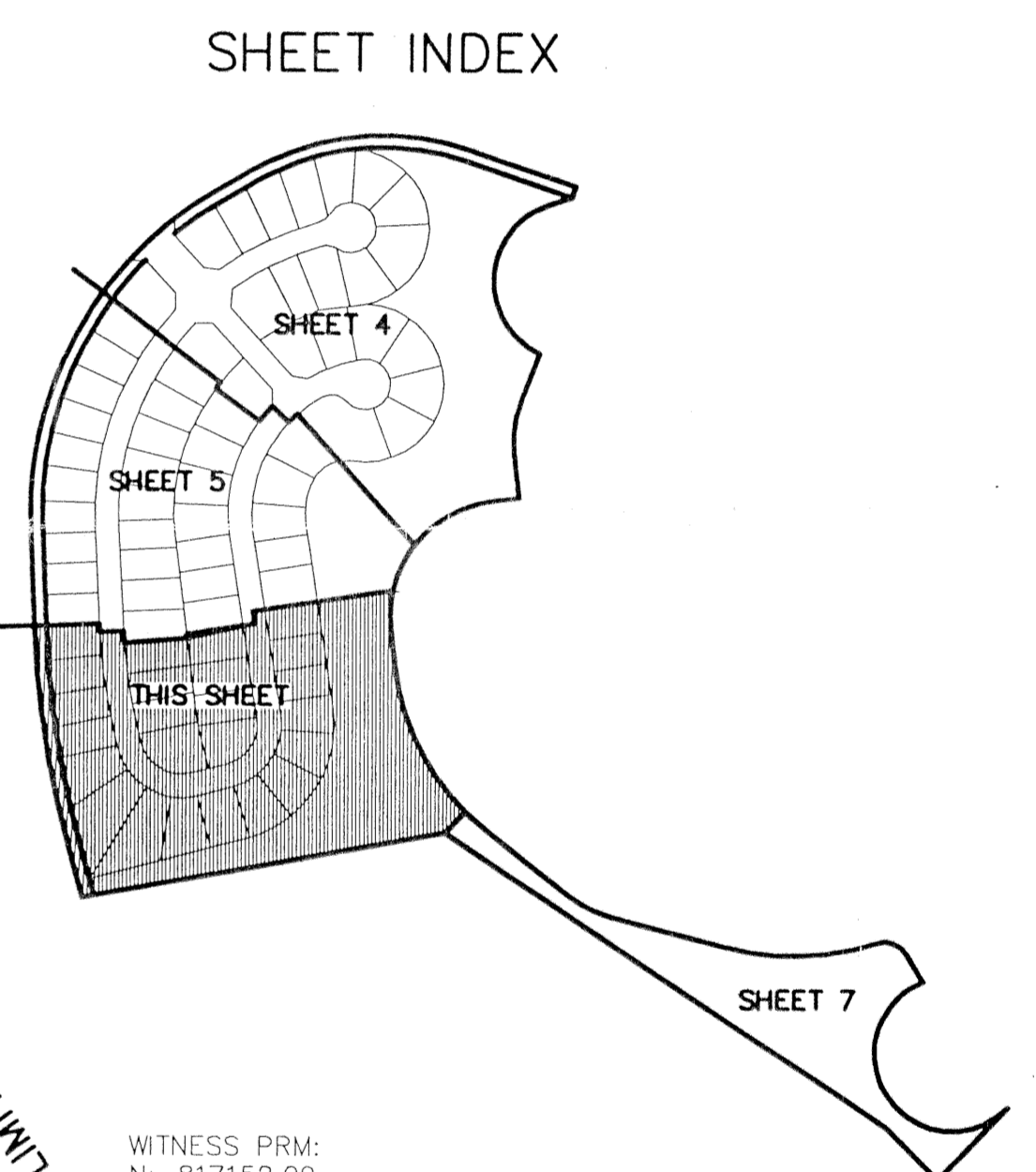


SMITH DAIRY WEST P.U.D.-PLAT No. 4
 BEING A REPLAT OF PART OF BLOCK 38 OF PALM BEACH FARMS
 COMPANY PLAT No. 3, AS RECORDED IN PLAT BOOK 2, PAGES
 45 THROUGH 54 OF THE PUBLIC RECORDS OF PALM BEACH COUNTY, FLORIDA
 IN PART OF SECTION 4, TOWNSHIP 45 SOUTH, RANGE 42 EAST,
 PALM BEACH COUNTY, FLORIDA
 SHEET 6 OF 7
 JUNE 1997



*PET. 94-77
 ALLOC. #0001
 5/2/2/I*



WITNESS PRM:
 N: 817152.09
 E: 928443.87

PARCEL F

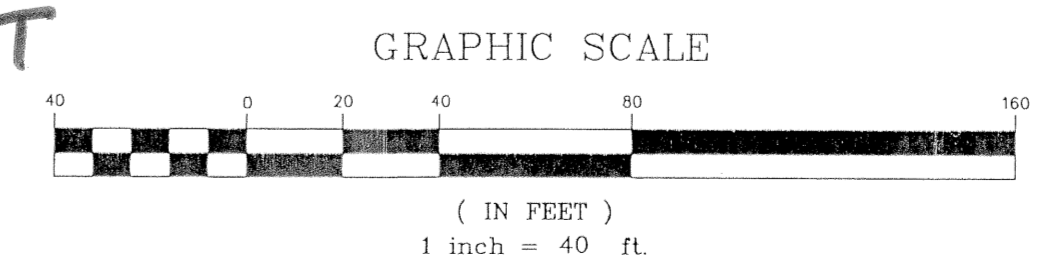
- LEGEND:
- = PERMANENT REFERENCE MONUMENT *P.L.S. 4826*
 - = PERMANENT CONTROL POINT *P.C.P. 4826*
 - R = RADIUS
 - A = ARC LENGTH
 - Δ = DELTA (CENTRAL ANGLE)
 - PC = POINT OF CURVATURE
 - PT = POINT OF TANGENCY
 - PSM = PROFESSIONAL SURVEYOR & MAPPER
 - PLS = PROFESSIONAL LAND SURVEYOR
 - UE = UTILITY EASEMENT
 - DE = DRAINAGE EASEMENT
 - LME = LAKE MAINTENANCE EASEMENT
 - N = NORTHING (GRID)
 - E = EASTING (GRID)
 - (C) = CALCULATED
 - (R) = RADIAL
 - LAE = LIMITED ACCESS EASEMENT

SCALE: 1"=40'
 DATE: JUNE 1997
NMI NICK MILLER, INC.
 Surveying & Mapping Consultants

SMITH DAIRY WEST P.U.D. - PLAT No. 4

2560 RCA Blvd., Suite 105
 Palm Beach Gardens, Florida 33410
 (561) 627-5200
 D.B.P.R. Business License No. 4318

DRAWING NUMBER
940148F



*USED NUMBER
 IN BLUE
 BT*

0653-008

*PAGE 175
 FLOOD ZONE
 ZONING PUD
 45 74-77
 ZIP CODE 33411
 PUB NAME*